

New Instructional Building

Project Summary

Project Scope:

This new multi-story classroom building will replace and consolidate campus square footage from several smaller inefficient buildings into one larger efficient building. The new building will be located directly north of Weaver Hall and west of the new parking garage on the northern edge of campus. When complete, it is expected to provide approximately 75,000 GSF of classrooms, teaching laboratories, and office space.

Sub-project(s): NIB Utility Yard

Project Budget:

\$66,897,944

Funding:

Measure E

Delivery Method:

Design Build

Project Phase:

Design

Construction Start:

April 2021

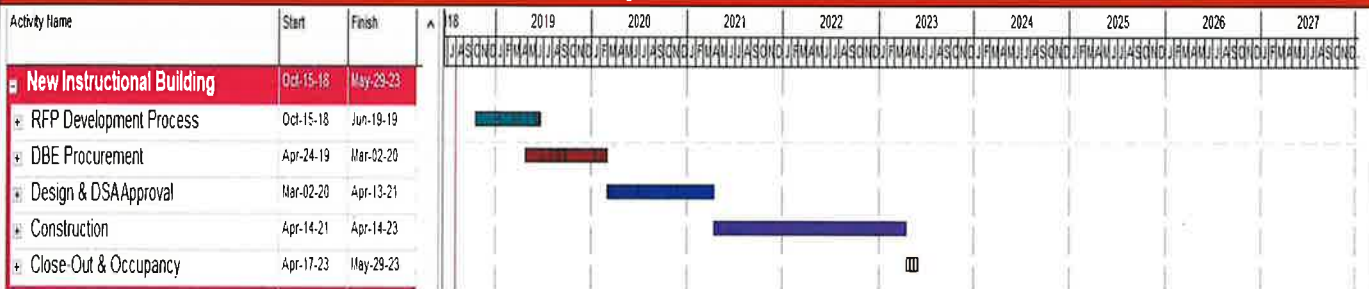
Construction End:

April 2023

Design-Build Contractor and Architect:

Balfour Beatty and HMC Architects

Project Schedule



Project Status

- Design development (DD) phase is complete.
- District staff and consultants are completing their review of the DD plans and specifications, for discussion and incorporation into the Construction Documents (CD).

Next 90 Days

- Construction Documents (CD) development underway; Site Package submittal to DSA planned for November/December.

Project Rendering

