

# Parking Garage

## Project Summary

**Project Scope:**

The parking garage is centrally located on the north end of the campus quad, defining the north edge of the developed campus between the New Instructional Building and the new tennis courts. It will be accessed from Sierra College Boulevard. It has been designed to accommodate solar panels on the 5<sup>th</sup> level for a future sustainability project.

**Sub-project(s):** Greenhouse

**Project Area:** 486,700 GSF | 101,000 SF footprint  
1,501 spaces | 5 levels

**Project Budget:**

\$52,300,000

**Funding:**

Measure E

**Delivery Method:**

Design Build

**Project Phase:**

Construction

**Construction Start:**

December 2019

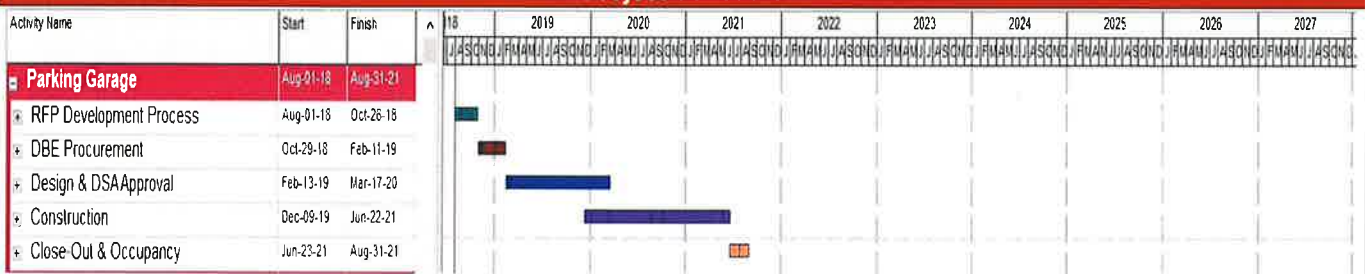
**Construction End:**

June 2021

**Design-Build Contractor:**

McCarthy Builders & Watry Design

## Project Schedule



### Project Status

- Concrete pour schedule is going well; have completed the first two floors and are currently working on the 3<sup>rd</sup> floor.
- Masonry structure for the stair towers on the south side of the building are currently up to the 4<sup>th</sup> floor.
- First 3 tennis courts are complete.
- Pool scoreboard support structure installed.

### Next 90 Days

- Continuing concrete and stair tower work.
- Two utility yards being installed.
- Pool scoreboard to be reinstalled at new location and reactivated.
- Following reinstallation of pool scoreboard, 3 remaining new tennis courts will be built.
- Landscaping around 3 initial tennis courts will be started.

## Project Photos

